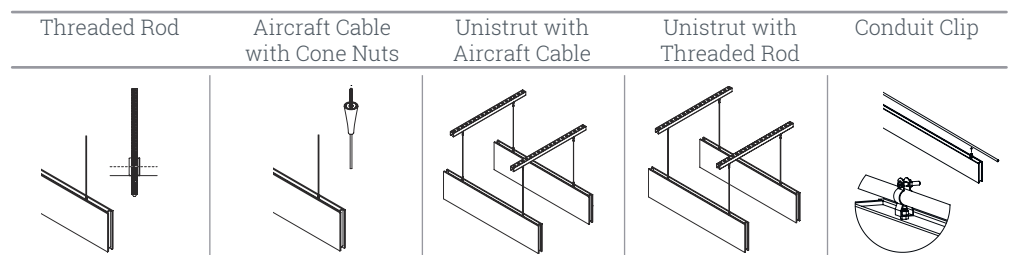


BAFL INSTALLATION 101

Fräsch baffles arrive ready for quick assembly and easy installation. Get to know more about your installation options and how to quickly, and easily, give your ceilings the silent treatment.

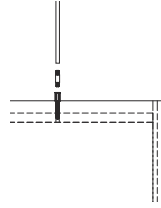
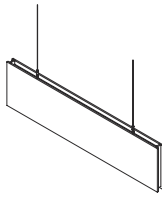
ATTACHMENT OPTIONS



BAFL INSTALLATION 101

The following installation types are recommended for our BAFL offerings

Aircraft Cable - Default Option



All BAFLs but LIT BAFLs

3' of 1/16" Aircraft Cable

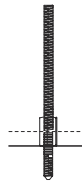
(2) Coupler Nuts

(2) Griplocks

(2) Hanger Bolts

Hanger Bolt Driver

Threaded Rod



All BAFLs

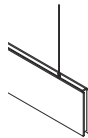
(2) Coupler Nuts

(2) Griplocks

(2) Hanger Bolts

Hanger Bolt Driver

Aircraft Cable with Cone Nuts



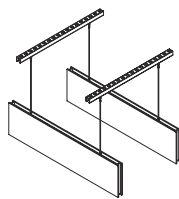
BAFL Classic, Plus, Blade, Tri, Skinny

Hanger Bolt

BAFL Canoe

Grip Lock

Unistrut with Aircraft Cable OR Threaded Rod



All BAFLs

3' of 1/16" Aircraft Cable

(2) Nylon Cone Nuts

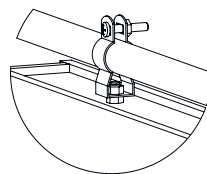
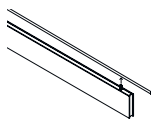
(2) Coupler Nuts

(4) Griplocks

(2) Hanger Bolts

Hanger Bolt Driver

Conduit Clip



All BAFLs

(2) Conduit Clips

(2) Nuts

(2) Hanger Bolts

Hanger Bolt Driver

Installer to provide ceiling hardware appropriate for ceiling type. Aircraft cable installation is the default installation type of Fräsch baffles. Three-foot lengths of 1/16" Aircraft Cable is provided with each Fräsch baffle purchased. If additional aircraft cable is desired, the additional length is the responsibility of the installer. Likewise, if threaded rod or Unistrut ceiling installation is preferred, the purchase of these materials is the responsibility of the installer.

Fräsch!

609 112th Street, Suite A
Arlington, TX 76011
12-2021